

A RUBATO

HIN

SVANTE HENRYSON

Section A, measures 1-4. The music is in bass clef with a key signature of one sharp (F#) and a 3/4 time signature. It begins with a repeat sign. The first measure contains a quarter note chord (F#, A, C), followed by eighth notes (A, G, F, E, D, C). The second measure is a whole note chord (F#, A, C). The third measure contains eighth notes (A, G, F, E, D, C). The fourth measure is a whole note chord (F#, A, C) followed by a quarter rest and a quarter note (C).

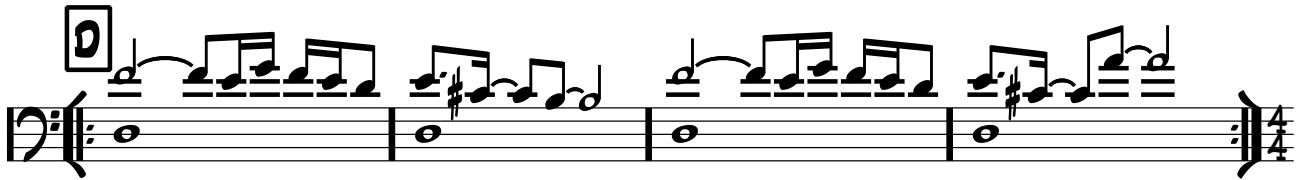
B

Section B, measures 5-9. The music is in bass clef with a key signature of one sharp (F#) and a 4/4 time signature. It begins with a quarter note chord (F#, A, C), followed by eighth notes (A, G, F, E, D, C). The second measure is a quarter note chord (F#, A, C) followed by a quarter rest and a quarter note (C). The third measure contains eighth notes (A, G, F, E, D, C). The fourth measure is a quarter note chord (F#, A, C) followed by a quarter rest and a quarter note (C). The fifth measure contains eighth notes (A, G, F, E, D, C). The sixth measure is a quarter note chord (F#, A, C) followed by a quarter rest and a quarter note (C). The seventh measure contains eighth notes (A, G, F, E, D, C). The eighth measure is a quarter note chord (F#, A, C) followed by a quarter rest and a quarter note (C). The ninth measure contains eighth notes (A, G, F, E, D, C) and ends with a double bar line.

C TEMPO

Section C, measures 10-14. The music is in bass clef with a key signature of one sharp (F#) and a 4/4 time signature. It begins with a quarter note chord (F#, A, C), followed by eighth notes (A, G, F, E, D, C). The second measure is a quarter note chord (F#, A, C) followed by a quarter rest and a quarter note (C). The third measure contains eighth notes (A, G, F, E, D, C). The fourth measure is a quarter note chord (F#, A, C) followed by a quarter rest and a quarter note (C). The fifth measure contains eighth notes (A, G, F, E, D, C). The sixth measure is a quarter note chord (F#, A, C) followed by a quarter rest and a quarter note (C). The seventh measure contains eighth notes (A, G, F, E, D, C). The eighth measure is a quarter note chord (F#, A, C) followed by a quarter rest and a quarter note (C). The ninth measure contains eighth notes (A, G, F, E, D, C). The tenth measure is a quarter note chord (F#, A, C) followed by a quarter rest and a quarter note (C). The eleventh measure contains eighth notes (A, G, F, E, D, C). The twelfth measure is a quarter note chord (F#, A, C) followed by a quarter rest and a quarter note (C). The thirteenth measure contains eighth notes (A, G, F, E, D, C). The fourteenth measure is a quarter note chord (F#, A, C) followed by a quarter rest and a quarter note (C), ending with a double bar line.

D



E



F



HIN

SVANTE HENRYSON

A RUBATO

Section A, measures 1-4. The music is in 3/4 time and D major. It begins with a repeat sign. The melody consists of eighth and quarter notes, while the bass line features a steady eighth-note accompaniment.

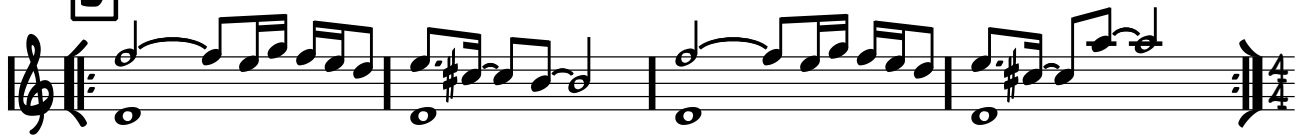
B

Section B, measures 5-10. The music changes to 4/4 time. The melody continues with eighth and quarter notes, and the bass line maintains a consistent eighth-note accompaniment.

C TEMPO

Section C, measures 11-14. The music returns to 3/4 time. It features a more complex melody with sixteenth-note runs in the upper voice and a bass line with eighth-note accompaniment. The section concludes with a repeat sign.

D



E



F

